

FASHION



PHOTOS BY IAN SHEH

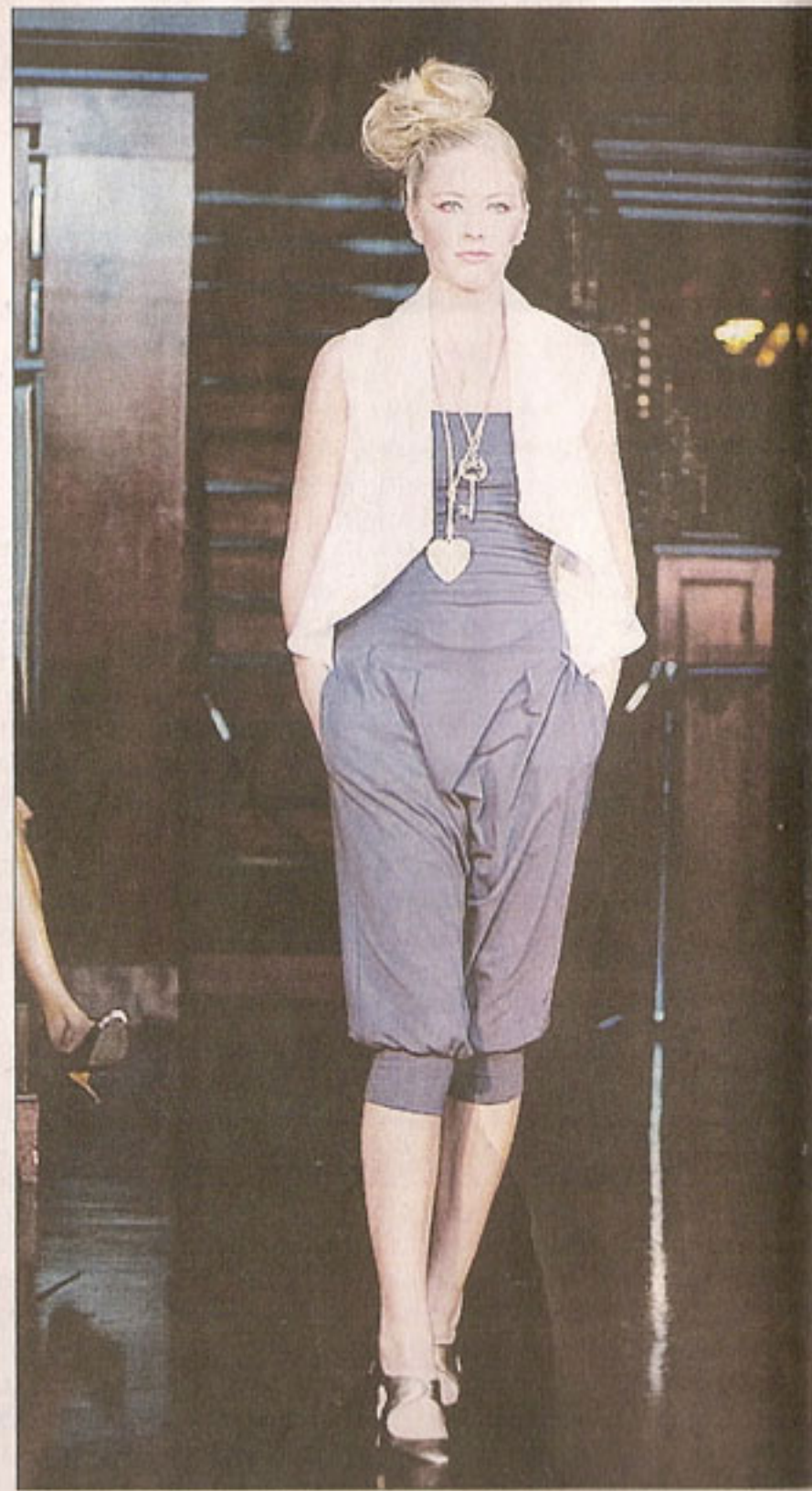
Su-hui Chu (centre), flanked by models, celebrates her win.

Coveted award means the world to new designer

Su-hui Chu, whose label is Ella Peru, was named Generation Next Designer for Spring 2010



An elegant dress that makes good use of its striking textile pattern. Chu's collection was deemed to be 'most rooted in fashion' by judges.



This jumper suit combines an upscale look with wearability. Chu was inspired to start designing when she saw how much people in other parts of the world do with few resources.